

Edinburgh Earth, Ecology and Environment (E4) Doctoral Training Partnership (DTP)



Welcome to the E4 DTP from:

Richard Essery

– Director

Emma Cunningham

– Deputy Director (Recruitment)

Massimo Bollasina

– Deputy Director (Training)

Stephanie Robin

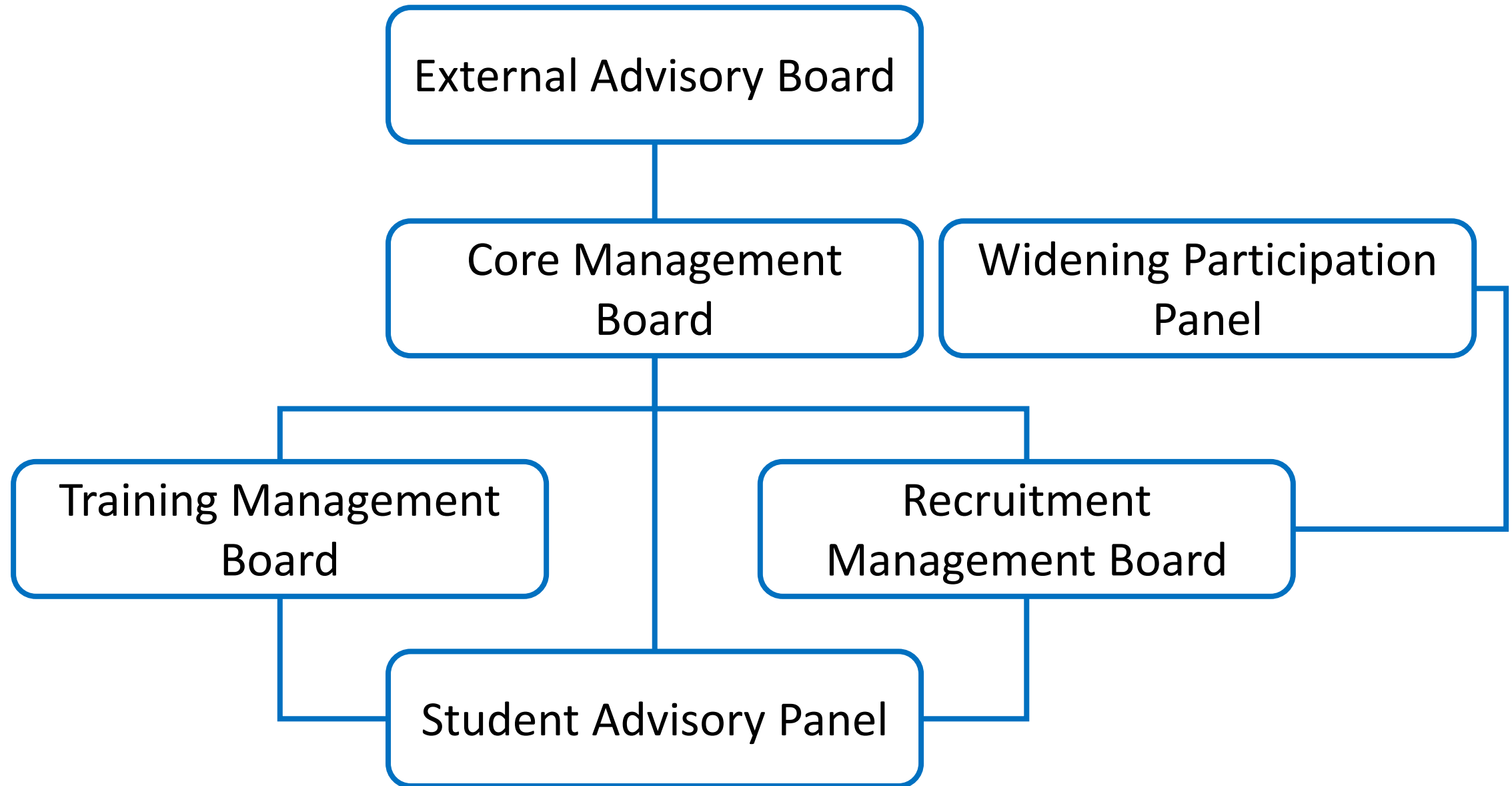
– E4 DTP Manager

Cris Blyth

– E4 DTP Support Administrator



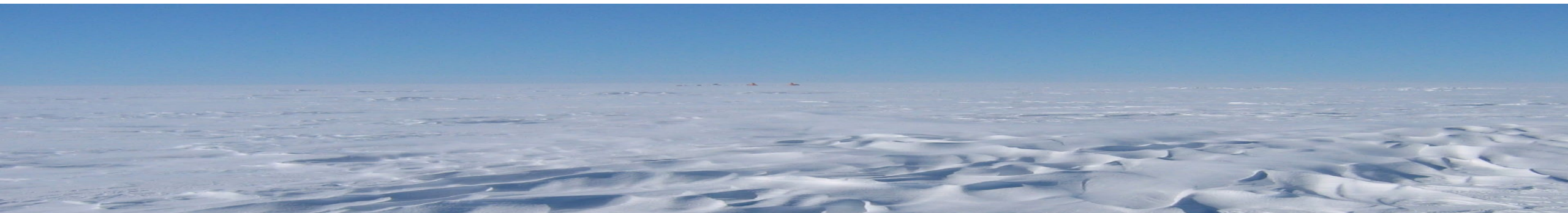
E4 DTP management



25 days of core training and 25 days of modular advanced training over the course of your PhD

Year 1 core courses:

- Frontiers in Environmental Sciences
- Numeracy, Modelling and Data Management
- Residential workshop



Professional Internship Programme (PIP)

3-month stipend extension while embedded in an external organization (usually during years 2 or 3)

Professional Development Scheme (PDS)

2-month stipend extension for students who have submitted two first-author publications within 42 months

Overseas Research Visit and Conference Fund (ORVCF)

To support extra opportunities for international conferences and research visits abroad (2 calls per year)



Partner Schools

- 

THE UNIVERSITY of EDINBURGH
School of GeoSciences
- 

THE UNIVERSITY of EDINBURGH
School of Biological Sciences
- 

THE UNIVERSITY of EDINBURGH
School of Chemistry
- 

THE UNIVERSITY of EDINBURGH
School of Engineering
- 

THE UNIVERSITY of EDINBURGH
School of Mathematics
- 

THE UNIVERSITY of EDINBURGH
School of Physics
and Astronomy
- 

THE UNIVERSITY of EDINBURGH
informatics
- 

THE UNIVERSITY of EDINBURGH
The Royal (Dick) School
of Veterinary Studies

A *partial* list of Collaborative Partners (see the handbook for the full list)



National Museums Scotland



UK Centre for Ecology & Hydrology



Scottish Wildlife Trust



NPL
National Physical Laboratory



Met Office



Royal Botanic Garden
Edinburgh



National Centre for Atmospheric Science
NATURAL ENVIRONMENT RESEARCH COUNCIL



SEPA
Scottish Environment Protection Agency



BioSS



SAMS



SRUC



BGS
British Geological Survey
Expert | Impartial | Innovative



NATIONAL TRUST for SCOTLAND



SPACE INTELLIGENCE



ecci
EDINBURGH CENTRE FOR CARBON INNOVATION



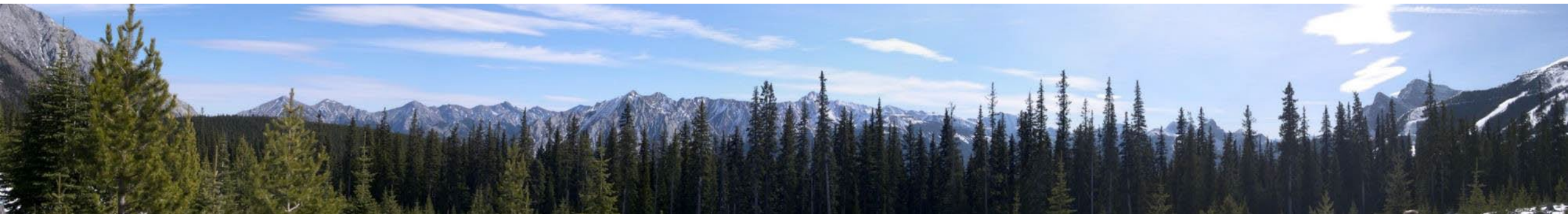
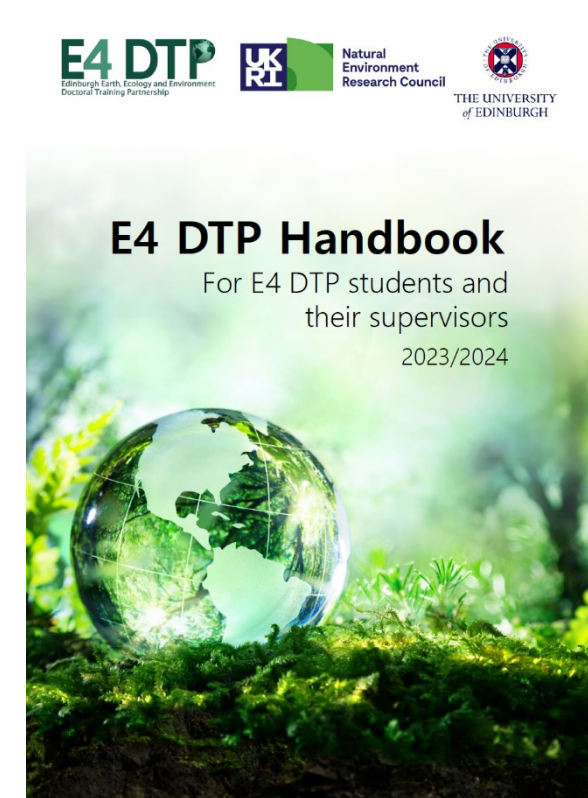
SWERC
Scottish Universities Environmental Research Centre



Forest Research

E4 DTP handbook

- DTP partners
- Funding and studentship details
- Policy, regulations and administration
- Training
- Expectations for students and supervisors



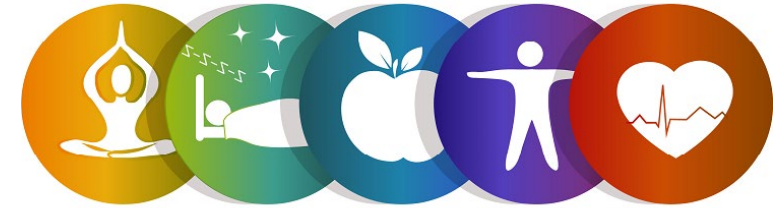
Our expectations of you

- Engage with your PhD and meet your supervisors regularly
- Let us know about any issues as soon as they arise
- Attend the core training activities (and if you cannot, let the organizers know)
- Record training and activities in your Training and Outreach Log
- Acknowledge the E4 grant number in publications
- Read emails promptly and respond or act accordingly



University Student Support Services

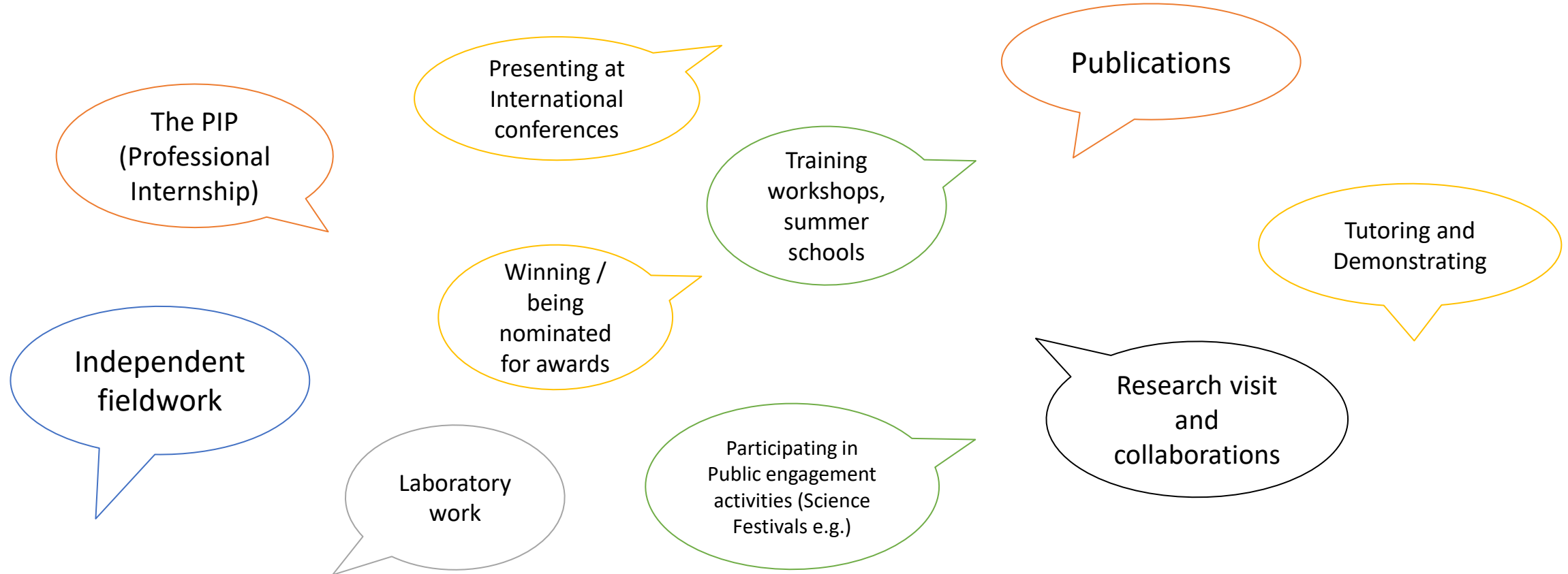
- Health
- Wellbeing and mental health
- Counselling
- Sport and Exercise
- Disability and Learning and Support
- Student Immigration
- Careers
- Institute for Academic Development
- Accommodation
- Student Finance
- Childcare



The Advice Place by EUSA (Edinburgh University Student Association)



Highlights from DTP alumni



What would you have done differently?

Ensure work and leisure activities are balanced throughout the PhD.

Request more regular meeting with my supervisor

Attend more training while I had the chance!

Spend more time with your PhD pals, sharing ideas and experiences

Climb more Munros!

Volunteer for more outreach events and support groups

Undertake a professional internship (PIP)

Nothing! You learn so well from your mistakes!

Start building network and reaching out to industry and professionals from the outset

Sit straight and take regular breaks!

Train on statistical software earlier in the PhD

Start writing the thesis earlier

[Six Things I wish I knew before starting a PhD](#)

Questions?

