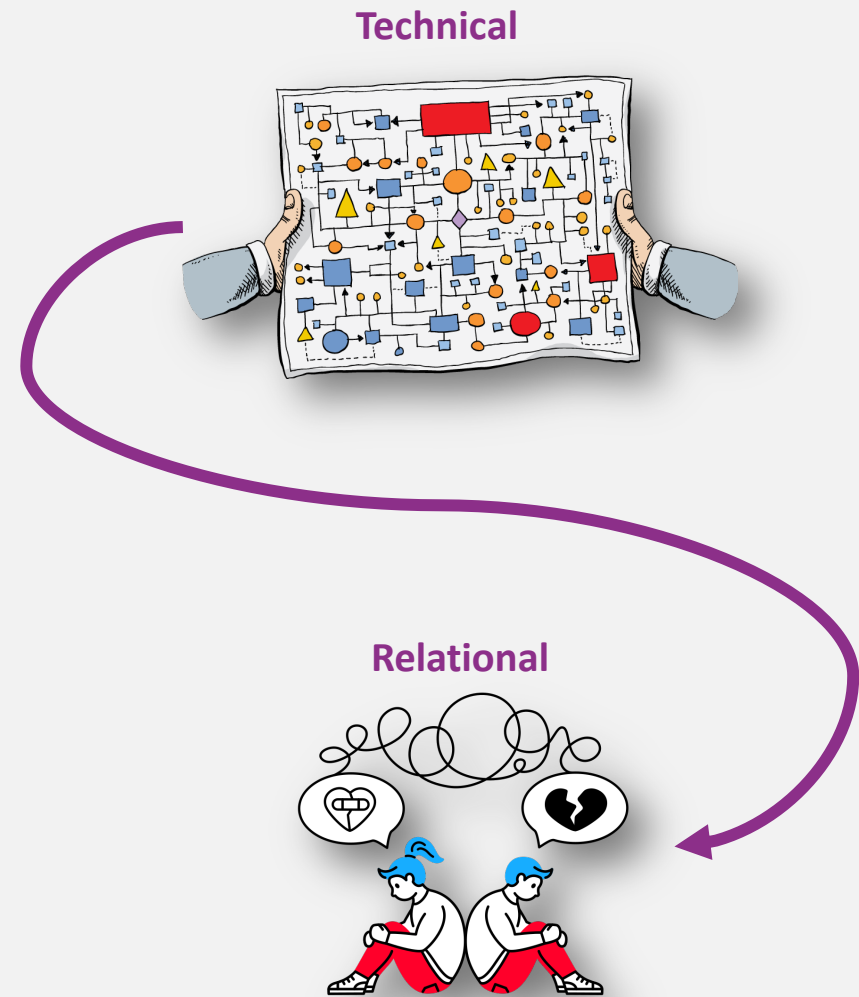


# What type of policy impact story are we telling?

---

SPRE 

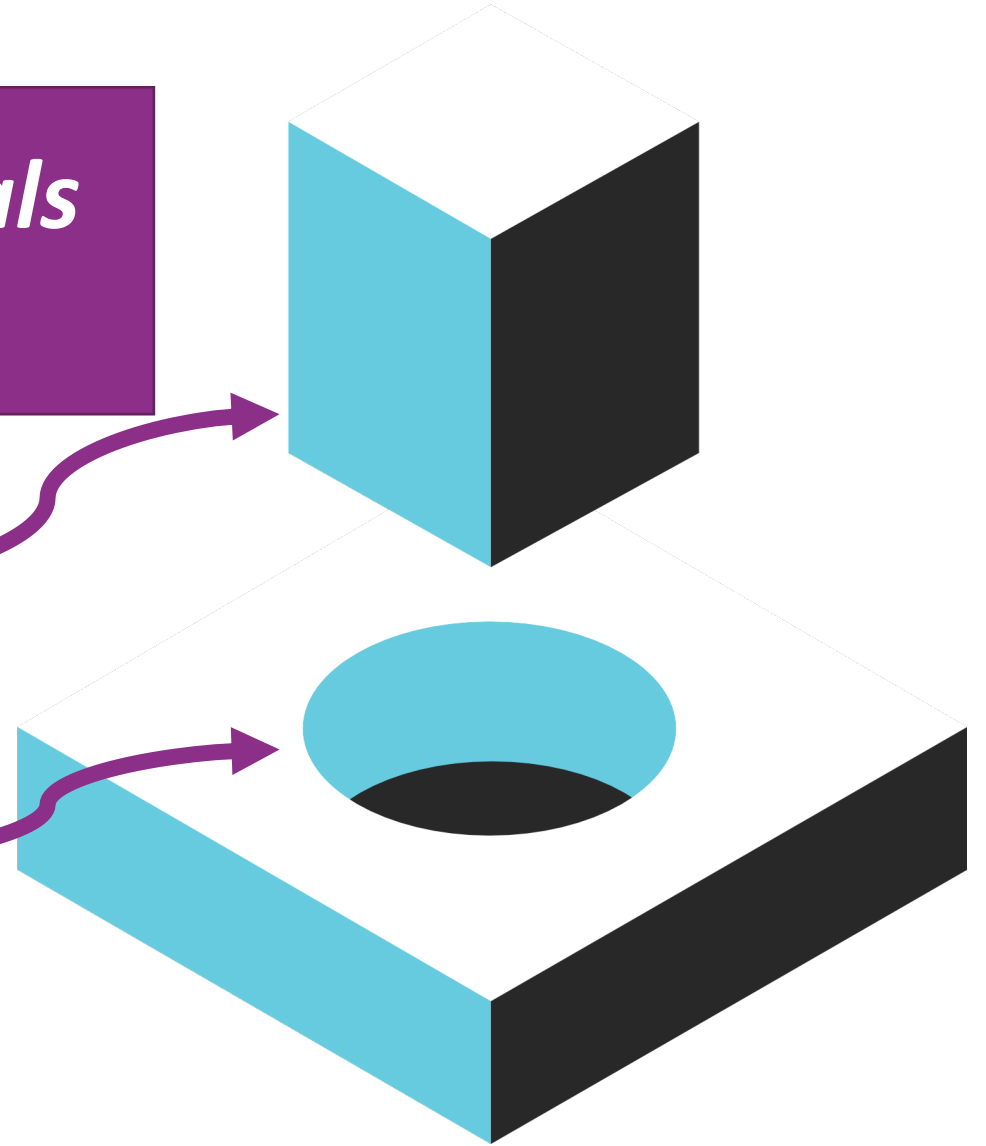
SCOTTISH POLICY & RESEARCH EXCHANGE



*What we do about something reveals what we think needs to change*

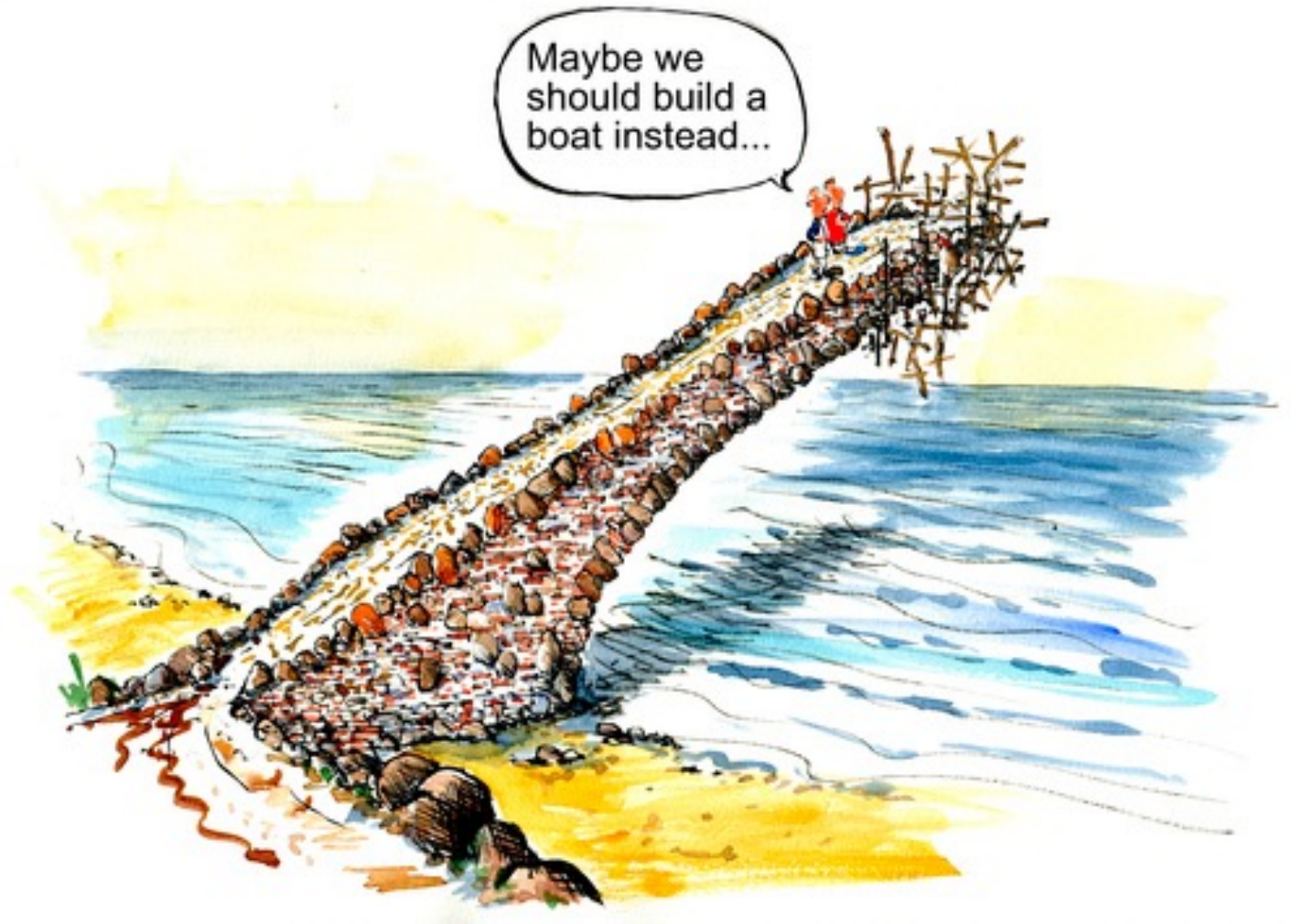
**The shape of what we do**

**The shape of the problem**



Risk of 'type III'  
error...

Trying to solve  
the 'wrong'  
problem!



For example, see Archibald (2019) **What's the Problem Represented to Be? Problem Definition Critique as a Tool for Evaluative Thinking**. *American Journal of Evaluation*, 41 (1) (2019), pp. 6-19, 10.1177/1098214018824043



# How are policy problems 'shaped'?



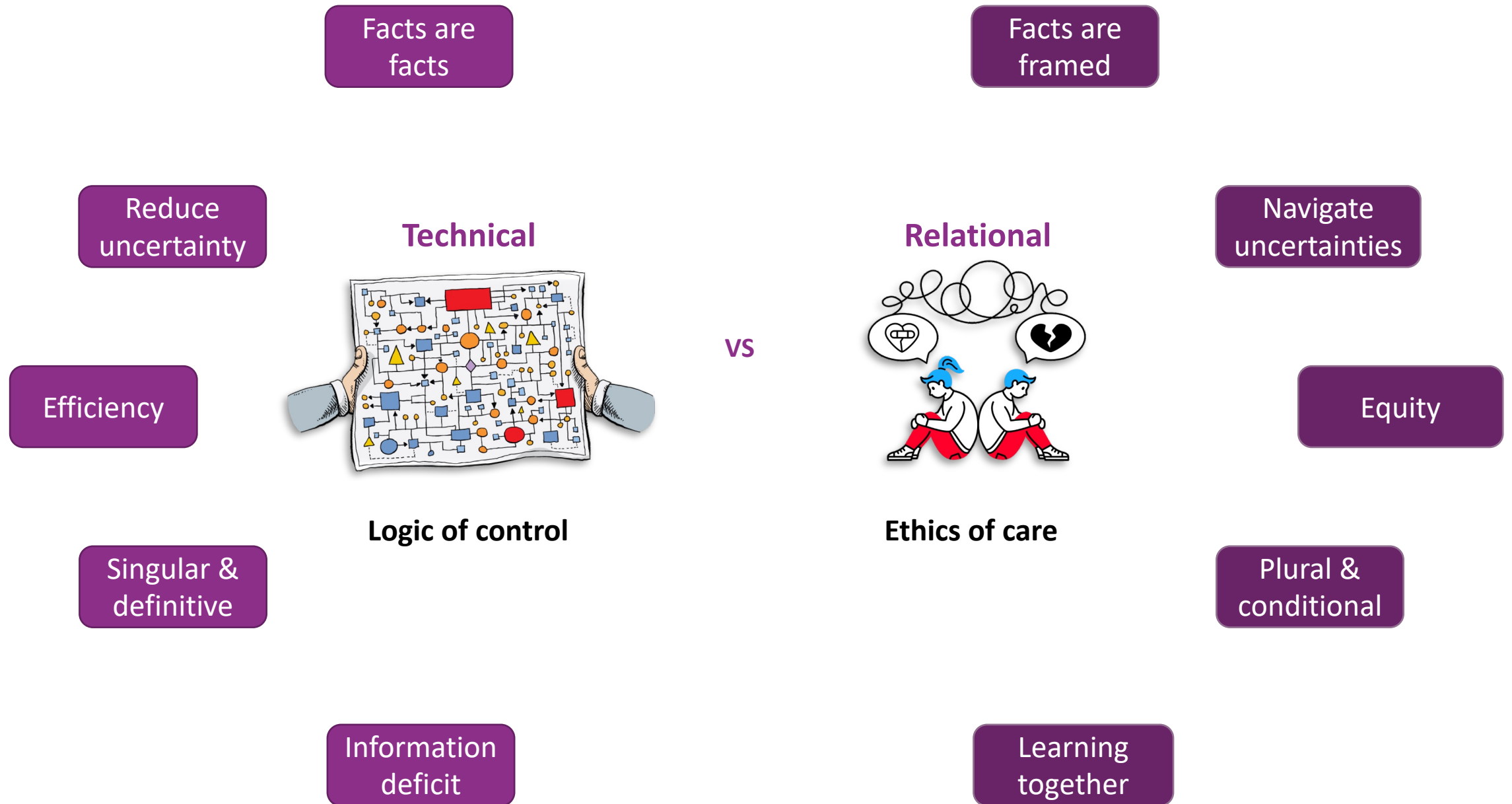
Some example research:

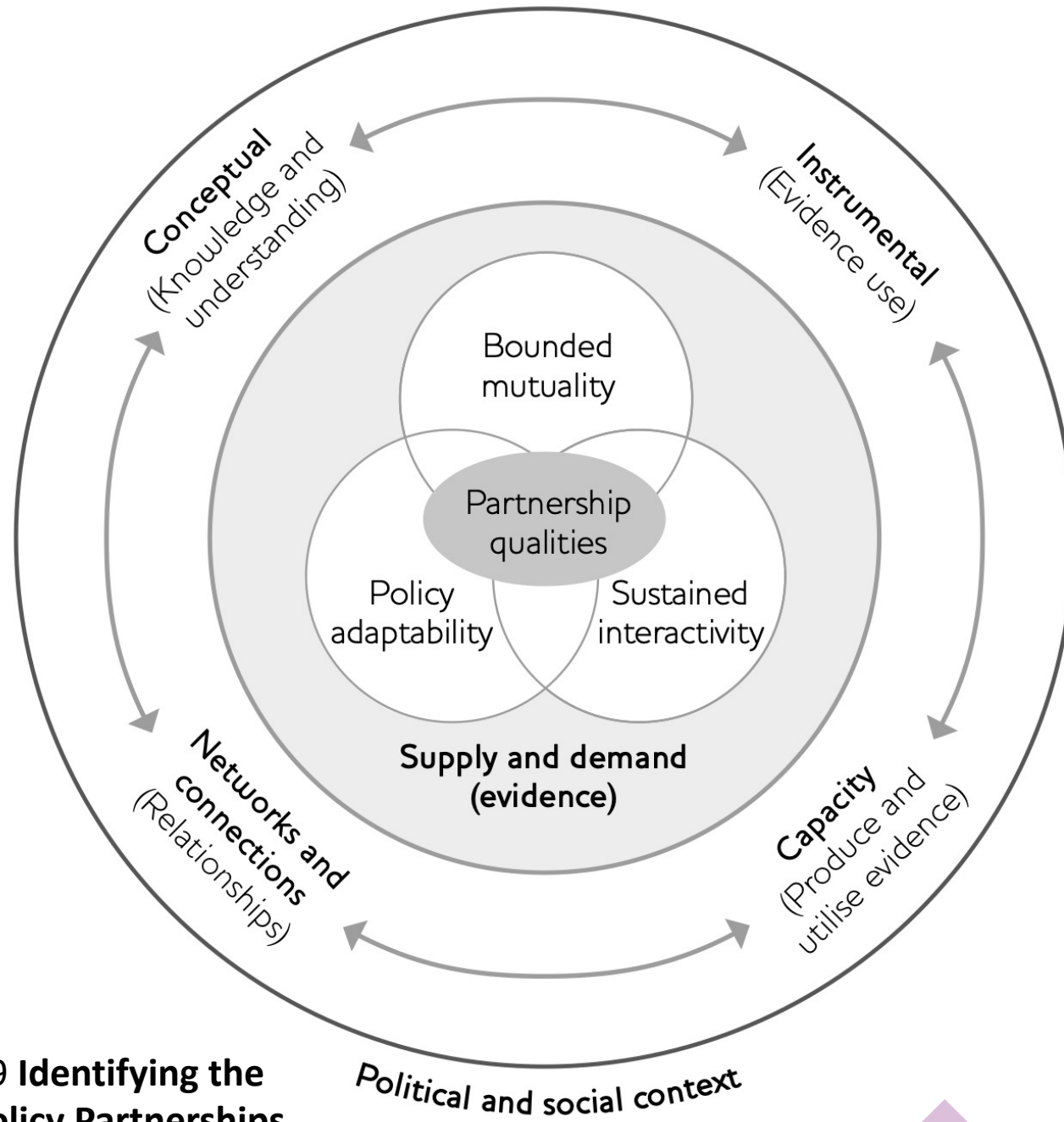
Lowe et al., 2016 **The Performance Management of complex systems – enabling adaptation**

Cairney et al., 2019 **Making policy in a complex world**



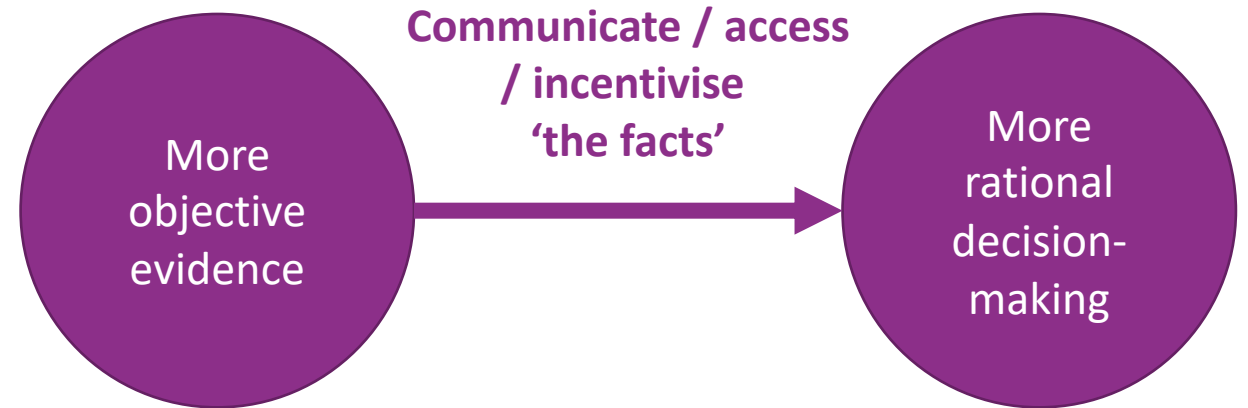
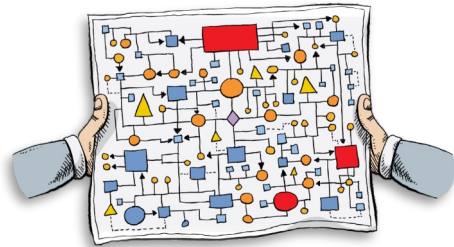
# What's the different that makes a difference?





Georgalakas & Rose 2019 **Identifying the Qualities of Research–Policy Partnerships**

## 'Technical' approaches



Some example research:

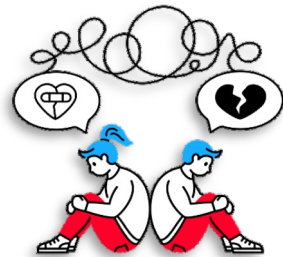
Cairney & Oliver 2020 **How Should Academics Engage in Policymaking to Achieve Impact?**

West et al., 2019 **Beyond "linking knowledge and action": towards a practice-based approach to...**

Tunrhout et al., 2019 **Environmental Expertise**



# 'Relational' approaches



Some example research:

Snijder & Apgar 2021 **How Does Participatory Action Research Generate Innovation?**

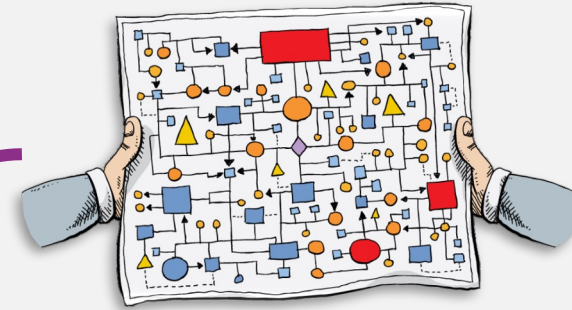
Knowles et al. 2021 **More than a method: trusting relationships, productive tensions, and two-way learning...**





Learning  
[to see]  
[to improve]  
[through]  
relationships

Technical



Relational

