



THE UNIVERSITY *of* EDINBURGH
Careers Service

Tools & Services from the Careers Service for PhD students

Sarah Johnston
Careers Consultant



University of Edinburgh Careers Service

– what do we do?

- Careers support to **all** students and graduates
- Careers information and resources
- Job vacancies and other opportunities
- Talks, events and careers fairs

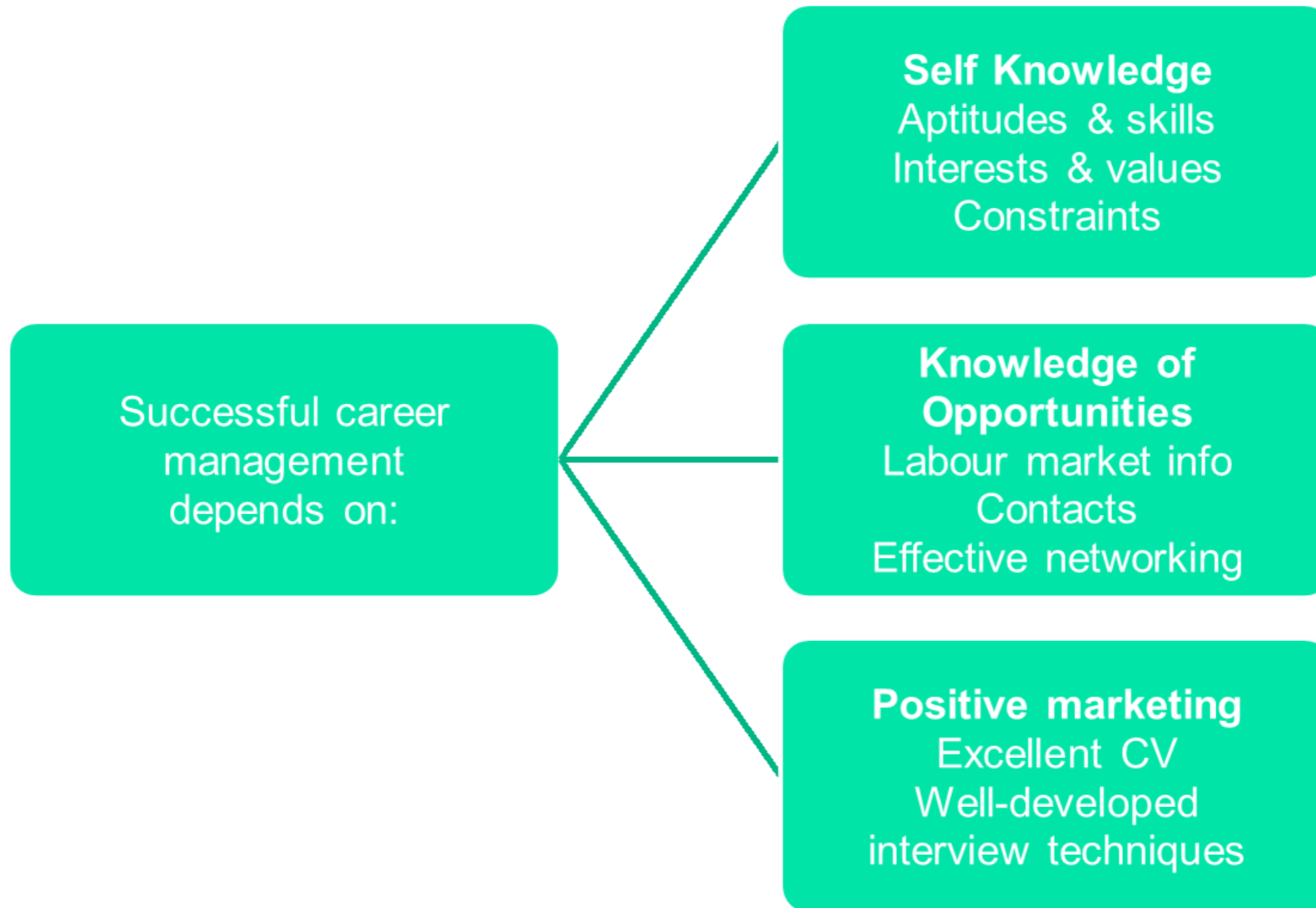


Today's session...

- Consider principles to effective career management
- Reflect on the skills developed through your PhD
- Share ways to generate career ideas
- Signpost resources to support you as you progress through your PhD and beyond



Steps to effective career management



Understand yourself...

Consider your:

- Strengths & Skills – what I'm good at AND what I enjoy using
- Values
- Needs
- Influences
- Personality

....and use this information when assessing different career options

www.ed.ac.uk/careers/students/postgraduates/phd-students/understand-yourself

Inspiring futures



Assessing my strengths.....

Firstly, what skills are involved in
completing a PhD?



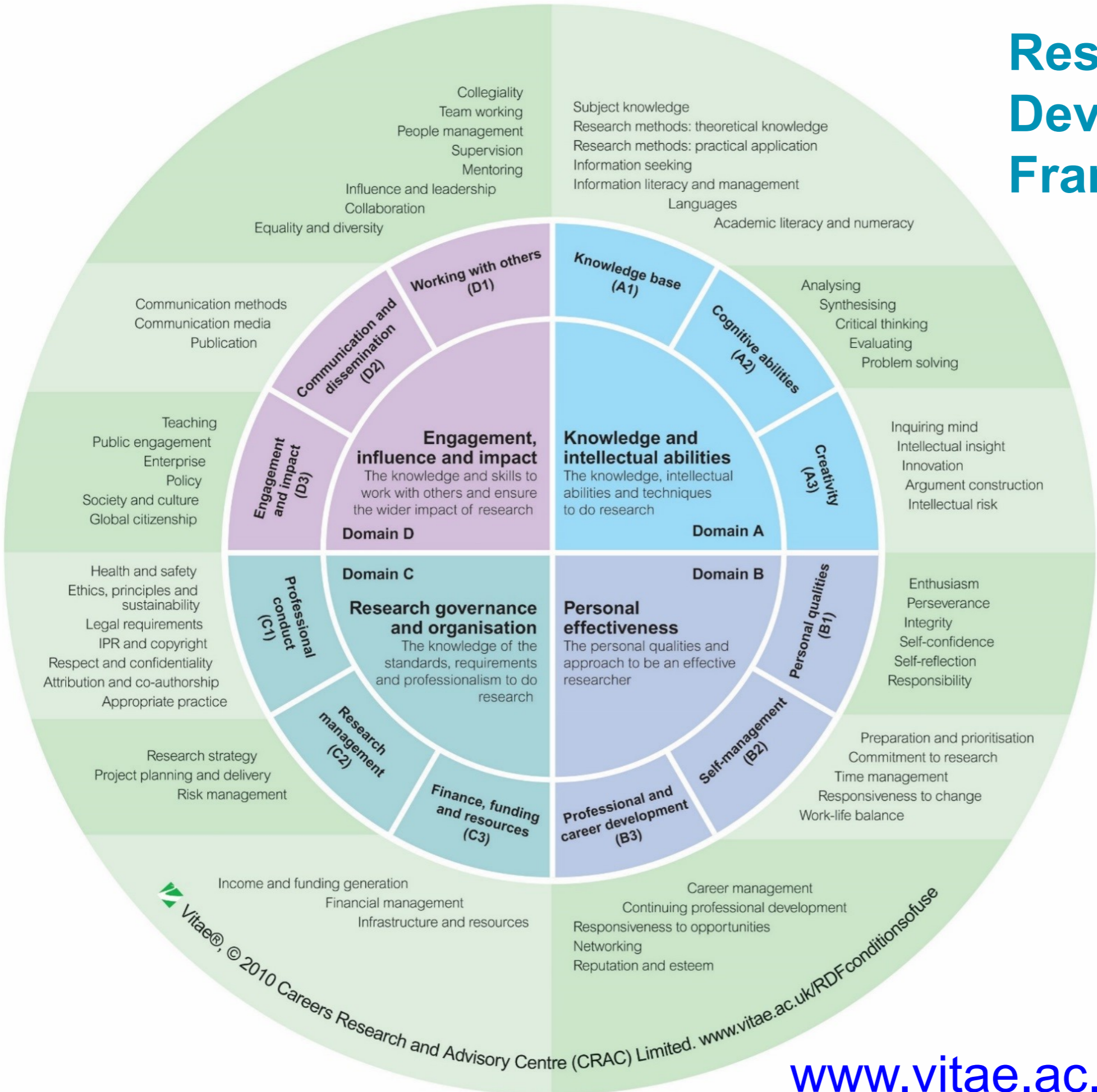
Assessing your strengths

Consider the skills on the whiteboard:

- Which are strengths for you?
- When do you lose sense of time?
- When do you feel a sense of achievement and know you've performed well?
- Do you have strengths that aren't listed?



Researcher Development Framework

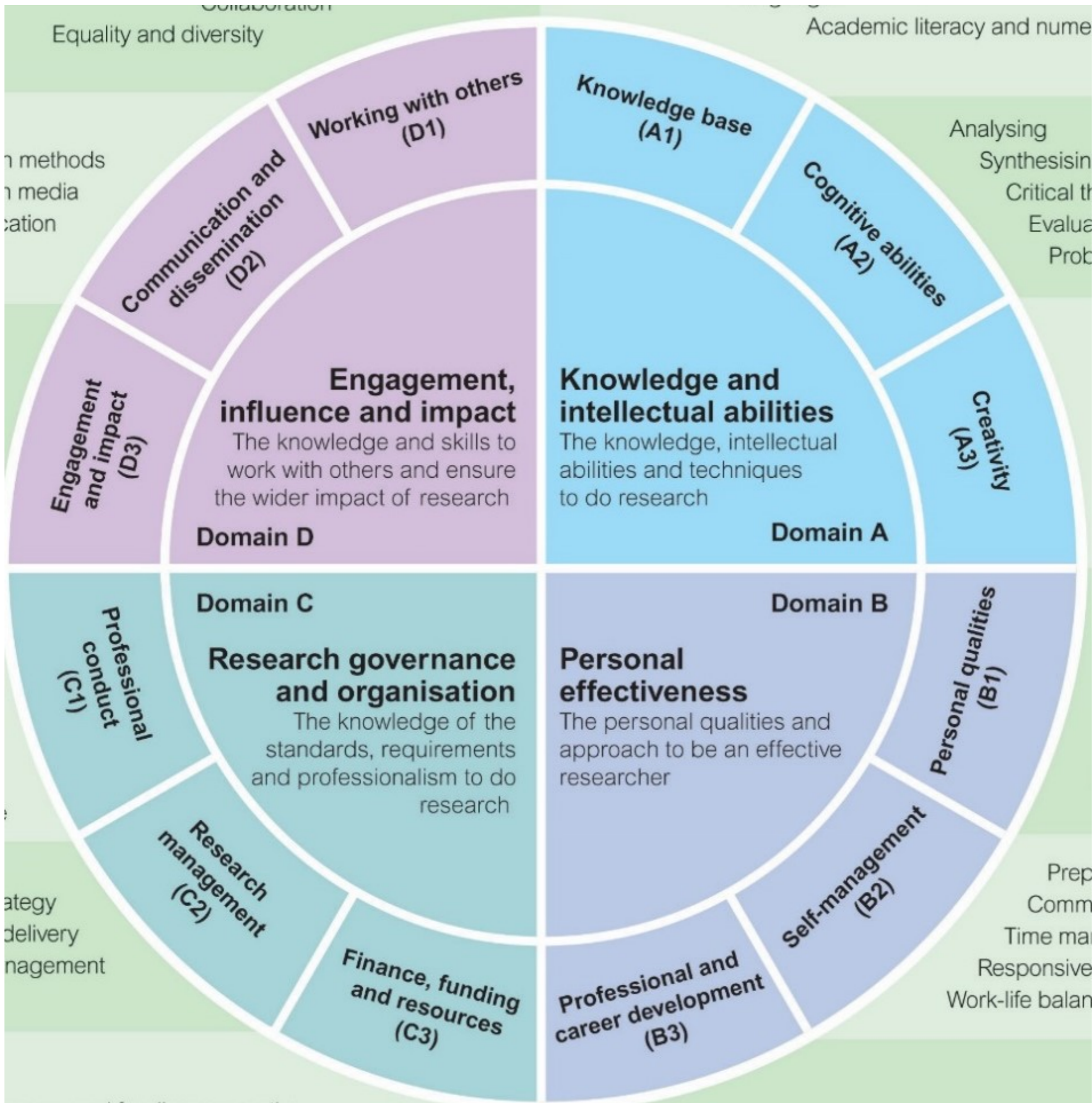


- ✔ 4 domains
- ✔ 12 sub-domains
- ✔ 63 descriptors

Vitae®, © 2010 Careers Research and Advisory Centre (CRAC) Limited. www.vitae.ac.uk/RDFconditionsfuse

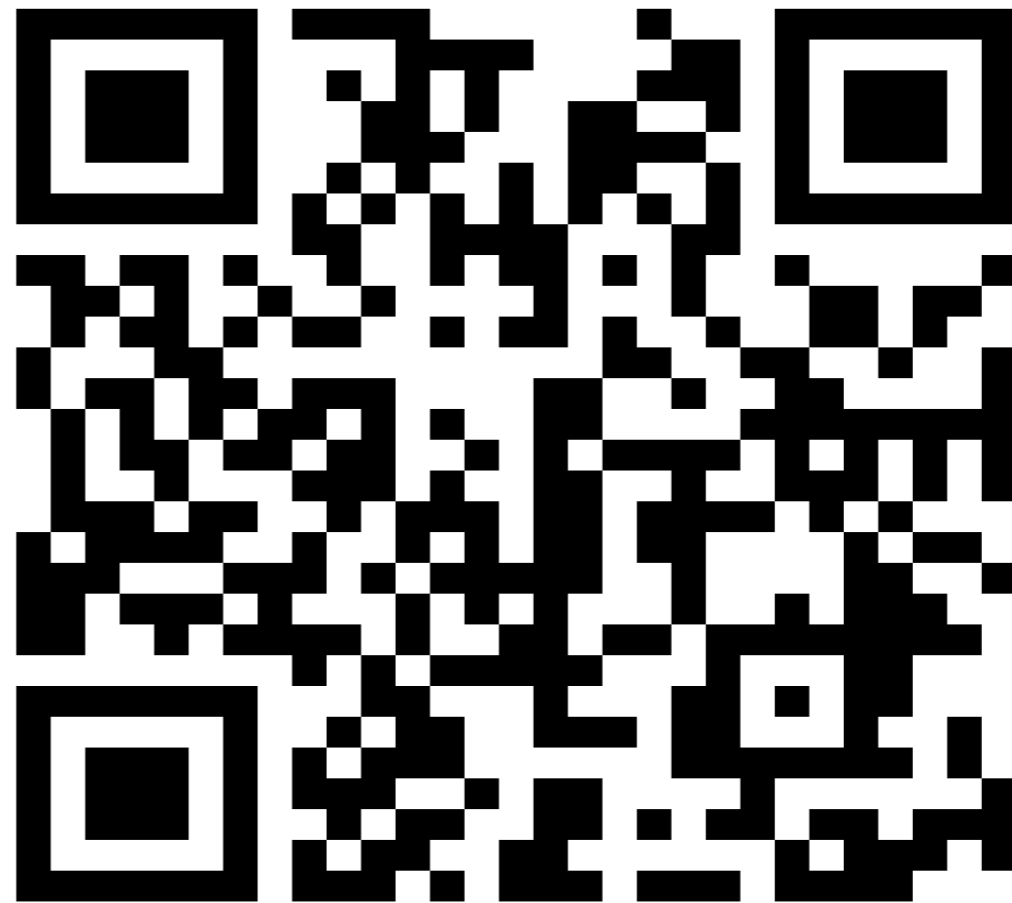
www.vitae.ac.uk/rdf



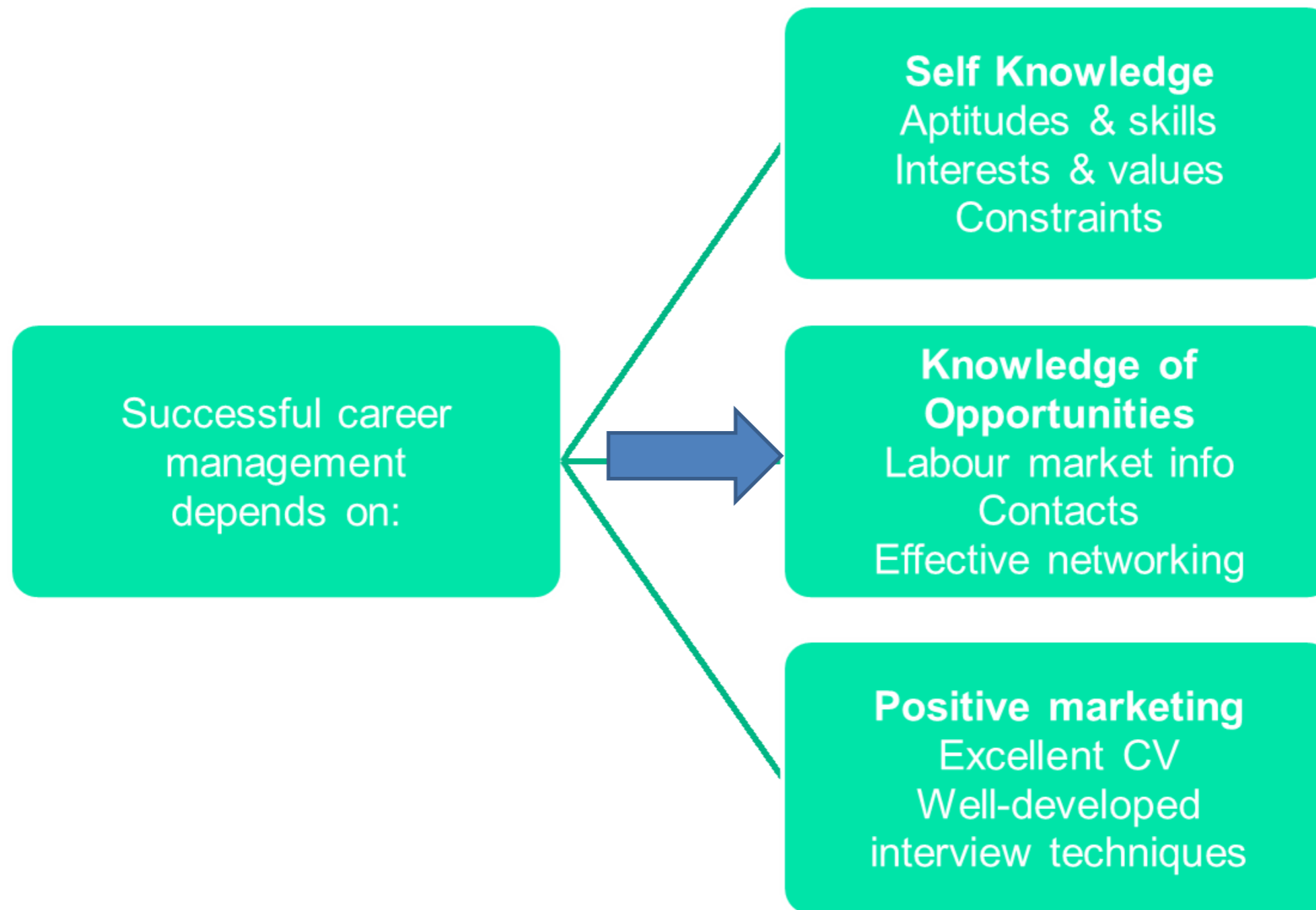


Evidencing your skills and attributes

Using your PhD as an example, add in examples from your experience that provide evidence of the skills outlined on the padlet. Discuss in small groups to begin.



Steps to effective career management

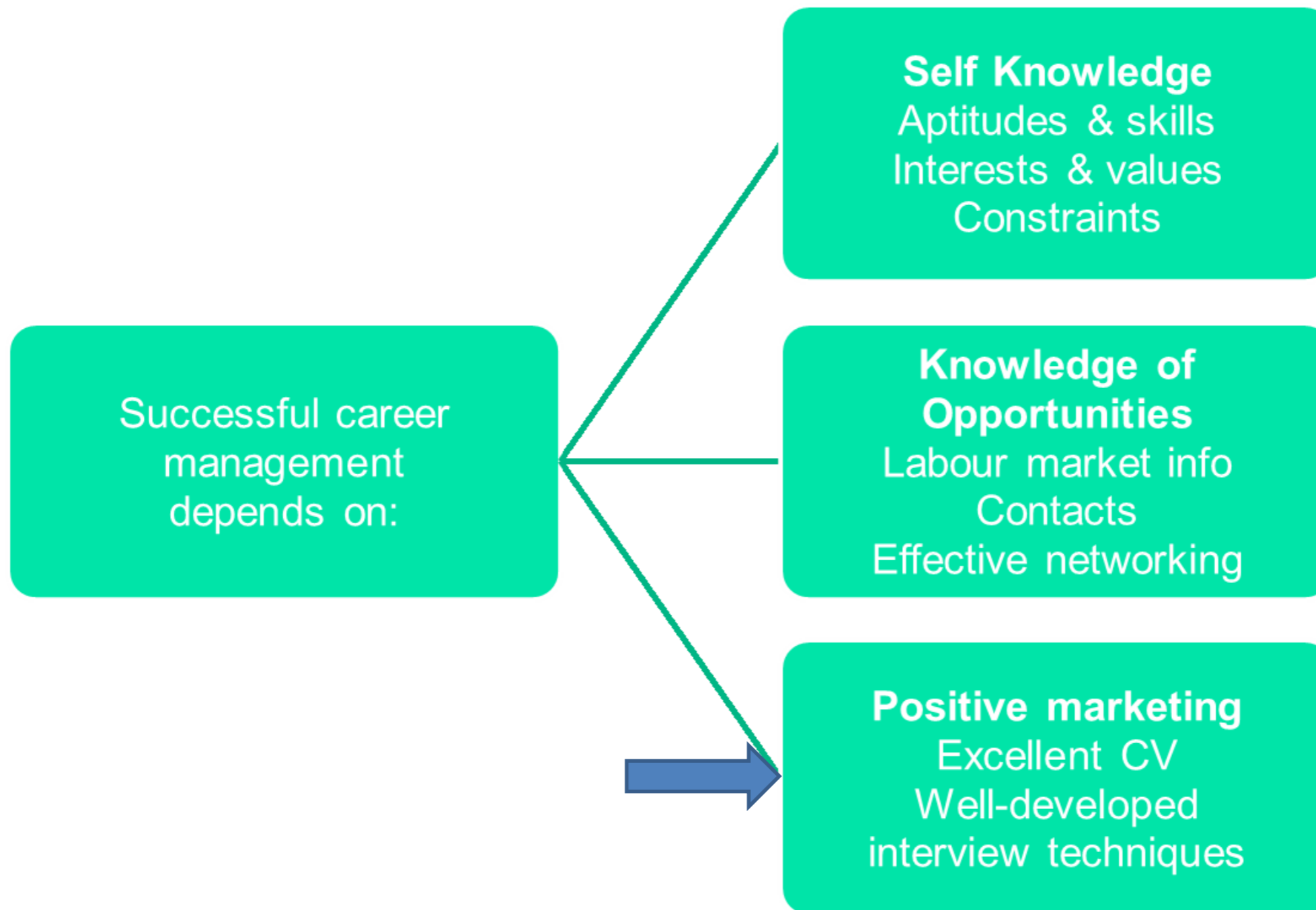


Generating and researching ideas

- <https://www.ed.ac.uk/careers/students/postgraduates/phd-students> > discover what's out there > generating ideas
- **What have other PhD graduates done?**
 - LinkedIn UoE alumni <https://www.linkedin.com/school/university-of-edinburgh/people/>
 - National data and career stories <https://www.vitae.ac.uk/doing-research/are-you-thinking-of-doing-a-phd/what-do-doctoral-graduates-do>
- Use / expand your **network**: friends, family, colleagues, PlatformOne
- Use **social media**, e.g. LinkedIn and Twitter groups e.g. PhD careers outside academia, #beyondprof #altac
- Explore by browsing vacancies, and attending employer events and careers fairs
- **Careers Service blog** - <https://blogs.ed.ac.uk/careersinformed/>



Steps to effective career management



Careers Service home

Students 

Postgraduates 

PhDs and MRes students

Understand yourself

Discover what's out there

Build experience

Make it happen

Become professional

Home > Careers > Students > Postgraduates > PhDs and MRes students

Contact us

PhDs and MRes students

Information and advice for research students

Understand yourself

Thinking about what you want and can offer is essential for career decision making and marketing yourself successfully in applications. Find out how.

Discover what's out there

Information and advice on your options including academic careers, research beyond academia and other career options, plus PhD graduate profiles.

Build experience

Find opportunities, including part-time work, to develop employability skills and gain insight into different work environments.

Make it happen

How to market yourself effectively including writing academic CVs and CVs for jobs beyond academia, and performing well at interview.

Become professional

Advice on how to continue developing professional behaviours to help in your research and make an easy transition into the workplace.

www.ed.ac.uk/careers/students/postgraduates/phd-students

Inspiring futures



Further support

PhD online sessions and upcoming events

- Upcoming events advertised via MyCareerHub
- Online recordings of sessions on [Media Hopper](#)
- **PhD Horizons** – every June - Wed 16 June in Appleton Tower

In person - you can visit us Monday to Friday:

- 3rd floor, Main Library Building, George Square
- Nucleus, 1st floor, Kings Buildings
- [Support](#) from Careers Information Advisers available at careers drop-in in person / online
- 'Ask a Question' on MyCareerHub

Speak to a careers consultant – 30-minute appointment (bookable up to 2 days in advance) or 45 min practice interview sessions (bookable up to 3 weeks in advance) through [MyCareerHub](#)



Any questions?

