



Durham  
University

# My career pathway

Fiona Clubb

Assistant Professor

Department of Geography, Durham  
University



- **BSc:** Geology and Physical Geography, University of Edinburgh (2009-2013)
- **PhD:** Controls on fluvial networks in mountainous landscapes, University of Edinburgh (2013 – 2017)



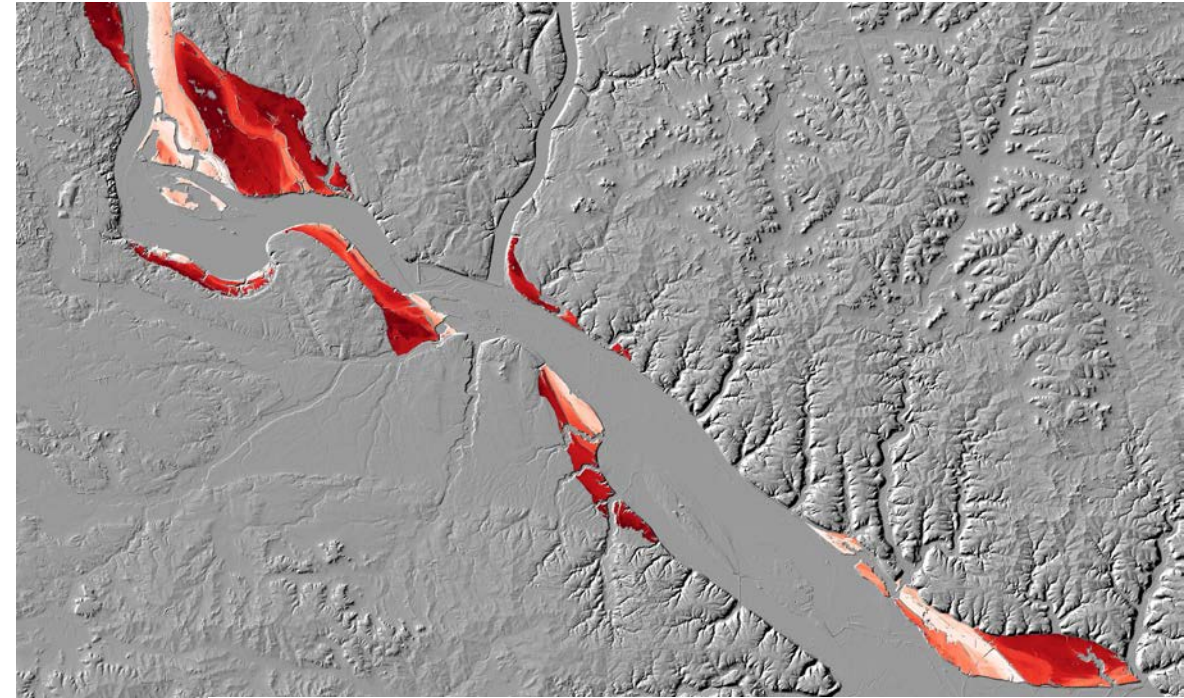
## Post-doc experience

- St. Anthony Falls Laboratory, University of Minnesota, USA
- Institute of Geoscience, University of Potsdam, Germany

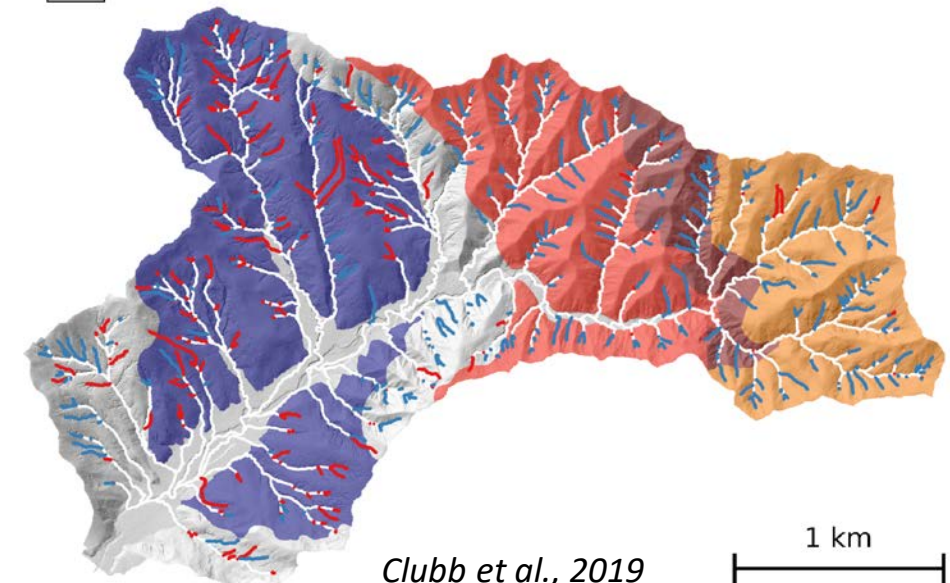
Applied for position at Durham University in January 2018, started June 2019.



Terraces along the Upper Mississippi River from lidar



a 2 clusters (red and blue):  $d_R = 0.9$



Clubb et al., 2019

## Things I think helped me to get my current position:

- Having all papers from PhD published
- Showing I could get funding: NERC Knowledge Exchange Fellowship with SEPA; German fellowship in data science
- Showing collegiality: organisation of seminar series, small research conference
- Teaching experience: but have to show how this is relevant to the department

Thanks, any questions?

